

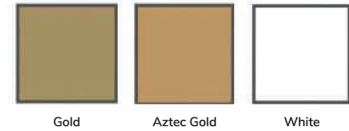
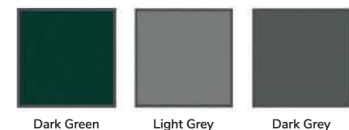
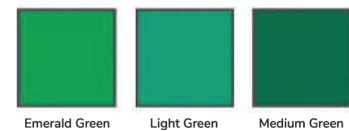
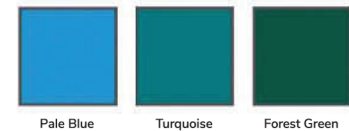
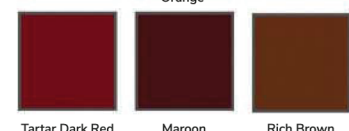
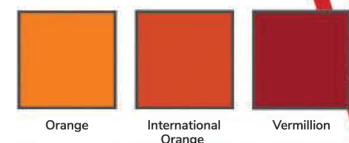
LETTER SPECIFICATIONS

METAL LETTER FINISHES

Letter finished shown are only representations. Painted letters are available in colors shown to the right or in custom color matches by request

PAINTED COLOR SELECTION

Colors shown are representations and are not meant for exact color matches.



F-1 Aluminum
Saein aluminum.mate edges(F=2 painted edges)



F-1B Aluminum
Mirror polished face. matte edges



F-3 Aluminum
painted face and edges.



F-4 Aluminum
Clear anodized face. matte edges



F-6L Aluminum
Light bronze,311 duranodic



F-6M Aluminum
Medium bronze, 312 duranodic



F-6D Aluminum
Dark bronze, 313 duranodic



F-6B Aluminum
Black anodized



F-6G Aluminum
Glod anodized



F-7 Bronze
Satin bronze face. dark edges



F-8 Bronze
Oxidized face and edges



F-7B Bronze
Mirror polished face dark edges



F-10 Bronze
Us-10 light face.Oxidized dark edges



F-7 Brass
Satin brass face, dark edges



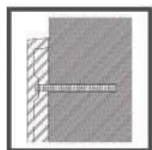
F-8 Brass
Oxidized face and edges

MOUNTINGS

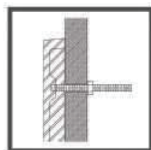
Advise thickness of wall surface for PM-4A and PM-1A mounts. Advise projection lengths on PM-1A,PM-1A PM-2 mounts.



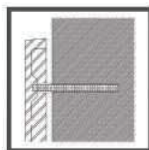
F-7B Brass
Mirror polished face, dark edges



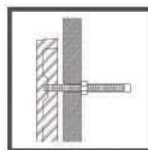
FM-4
Flush mount with threaded studs set in adhesive.



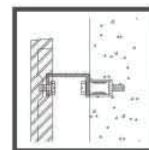
FM-4A
Same as FM-4,bolted from the rear (no adhesive)



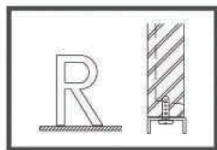
PM-1
Projected mount with collars and threaded studs set in adhesive



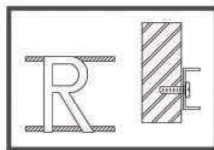
PM-1A
Same as PM-1,bolted from the rear (no adhesive)



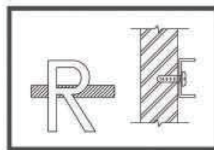
PM-2
Projected mount with brackets (minimum 2" projection).



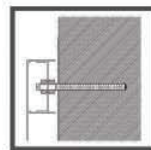
BM-3
Free standing channel or bar mount.



BM-3A
Double back bar mount.



BM-3B
Single back bar mount.



FABRICATED LETTERS
Letters are adaptable to any stud-style mounting shown.